

# Daily Weather Update

## Coastal Area Around The Sri Lanka

Information Fusion Center-Colombo

Amplitude

130j-2019

100

50

0

100

50

0

100

50

0

100

50

0

100

50

0

100

50

0

100

50

0

100

50

0

100

50

0

100

50

0

100

50

0

100

50

0



Information Fusion Center  
Colombo  
Sri Lanka

Date 2026.06.02

**FORMATION FUSION CENTER**

# **WEATHER FORECAST FOR SEA AREAS AROUND THE ISLAND DURING NEXT 24 HOURS**

**Issued at 05.30 a.m. on 02 Jun 2026**



**DEPARTMENT OF METEOROLOGY  
SRI LANKA**

**COLOMBO - SRI LANKA**

# CONDITION OF THE RAIN

Showers or thundershowers will occur at several places in the sea areas off the coast extending from Puttalam to Hambantota via Colombo and Galle.

# WINDS

Winds will be southwesterly.

Wind speed will be (30-40) kmph.

Wind speed can increase up to (55-60) kmph at times in the sea areas off the coast extending from Kankasanthurai to Chilaw via Mannar and, from Galle to Pottuvil via Hambantota.

Wind speed can increase up to 50 kmph at times in the other sea areas around the island.

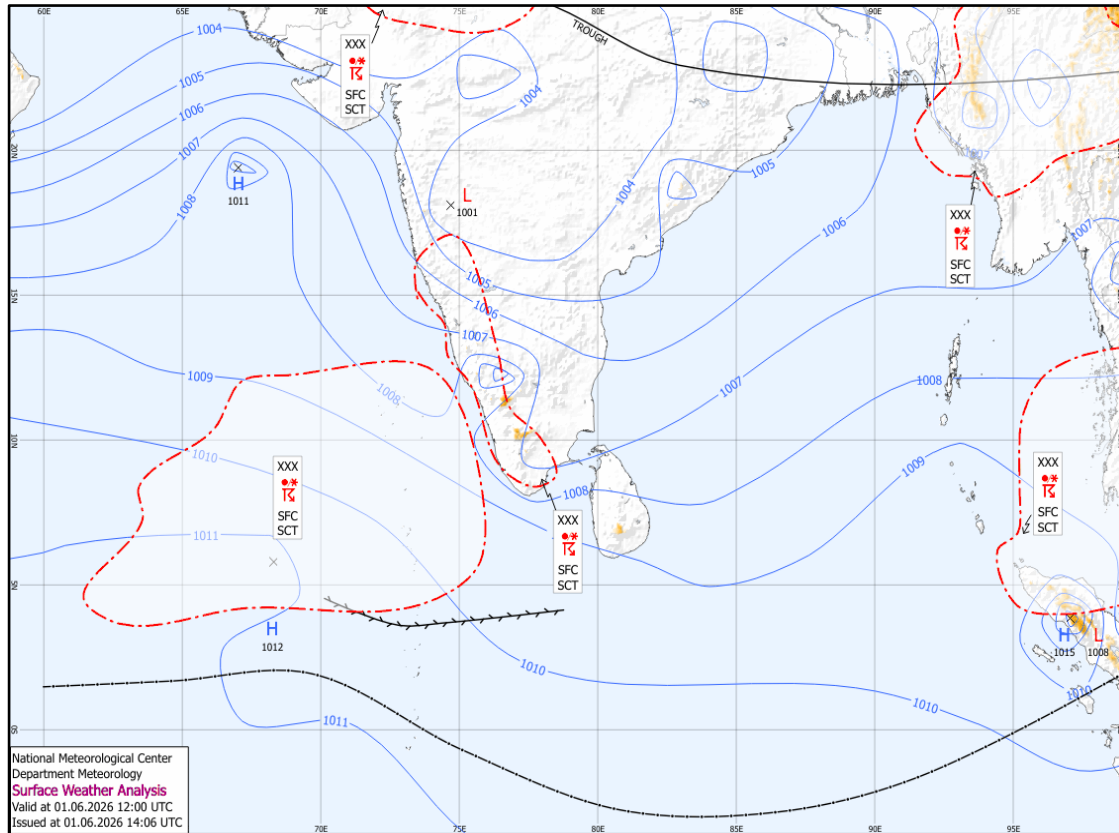
# STATE OF SEA

The sea areas off the coasts extending from Kankasanthurai to Chilaw via Mannar and, from Galle to Pottuvil via Hambantota will be rough at times.

The other sea areas around the island will be fairly rough at times.

The wave height may increase about (2.0 – 2.5) meters in the sea areas off the coast extending from Kalpitiya to Pottuvil via Colombo, Galle and Hambantota. (this is not for land area). Temporarily strong gusty winds and very rough seas can be expected during thundershowers.

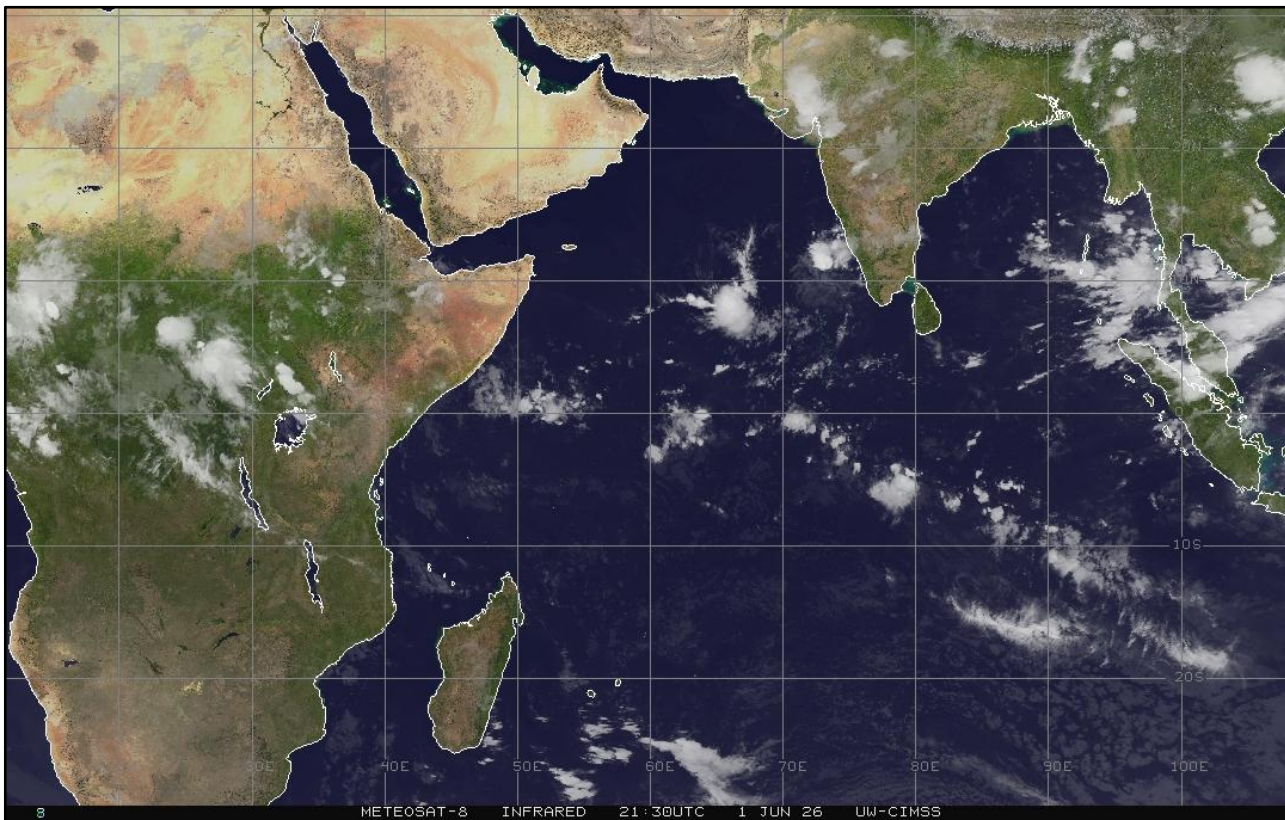
# SURFACE ANALYSIS CHART



This analysis charts show the surface pressure pattern over Sri Lanka and the surrounding area. They display isobars (lines of equal pressure) and indicate areas of high (H) and low pressure (L) along with their central pressure value. Isobars are represented by solid blue lines, spaced every 1 hPa. High pressure is usually associated with mainly dry, settled weather with light winds, while low pressure is normally associated with unsettled weather, which is often wet and windy. The lower the pressure, generally the stronger the winds and the heavier the rain.

The map shows Coordinated Universal Time (UTC) and the local time is UTC+5.30.

# SATELLITE IMAGE



02-Jun-26

IFC -Colombo



Information Fusion Center  
Colombo  
Sri Lanka

**THANK YOU**

The Officer Incharge  
Information Fusion Centre - Colombo  
Naval Headquarters, Colombo, Sri Lanka  
+94 11 719 480 6  
+94 74 120 4829  
[ifc@navy.lk](mailto:ifc@navy.lk)  
[ifc.cbo@gmail.com](mailto:ifc.cbo@gmail.com)